

FORENSICS CABINET



Fisher Hamilton®

FORENSICS CABINET

Fisher Hamilton Forensics cabinets feature ducted fuming chambers to provide protection for laboratory personnel from dangerous fumes and odors generated during the treatment of evidentiary materials.

Forensics cabinets are ideal for print analysis and fuming processes using Cyanoacrylates.

The cabinets contain individually vented chambers of various sizes designed to minimize overall airflow. Reduced airflow enhances

the effectiveness of the fuming process and minimizes fuming time.

Fisher Hamilton Forensics cabinets are available in both bench and floor mounted configurations.



Floor Mounted Unit

- Floor mounted unit provides a total of 31 cubic feet of containment area.
- Energy efficient, exhausts only 31 cubic feet of air per minute.

Common Features:

- Three chambers, each chamber can be operated independently.
- Each chamber features a vapor-proof incandescent light fixture.
- Chamber doors include padlock hasp to secure evidence during fuming procedure.
- Hanging rods are provided in each chamber, shelf is provided in the large chamber of floor mounted unit.
- Electrical outlets with power cord pass through for routing hot plate cords are provided for each chamber.
- Plastic laminate construction with 45 lb. density particle board core, dowelled joinery, Wilson Art® Chemsurf chemical resistant plastic laminate interior and high pressure plastic laminate exterior.



Bench Top Unit

- Bench top unit provides a total of 13 cubic feet of containment area.
- Energy efficient, exhausts only 13 cubic feet of air per minute.



FORENSICS CABINET



Cabinet has three separate chambers of various sizes to allow separate fuming processes concurrently.

Each chamber has an air-flow damper that opens to allow purging of chamber before access and closes during fuming process.

Doors are clear glazed with laminated safety glass to view evidence and v-strip sealed for containment during fuming process.

Cabinet is prewired to junction box at top of unit.

Each chamber includes a vapor-proof incandescent light.

Each cabinet is supplied with one light switch and four electrical outlets - 125V-20AMP.

Doors have self-latching stainless steel handles with locking capability.

Interior is lined with Chemsurf® laminate to provide increased reagent resistance and ease of cleanability.

Full height, type 304 stainless steel piano hinge.

32MM dowel construction with high pressure laminate exterior. Exterior color is light gray with white interior.

Ductwork is corrosion resistant, manifolded to one point at top of unit for easy field connection to exhaust ductwork.

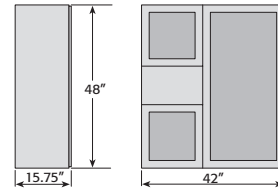
Units are ASHRAE 110-1995 tracer gas tested for containment. Test report is included with each unit.

FORENSICS CABINET

ORDERING INFORMATION

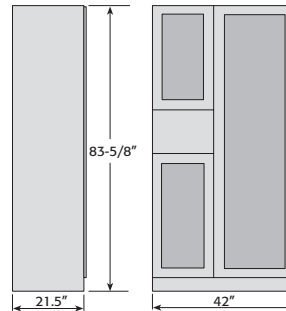
Counter Top Unit

Product Number	Capacity	Exhaust Volume	Exhaust Collar Diameter	Weight
950P200GY	13 Cubic Feet	13 CFM	1.5" I.D.	230 LBS.



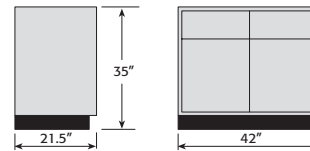
Floor Mounted Unit

Product Number	Capacity	Exhaust Volume	Exhaust Collar Diameter	Weight
950P201GY	31 Cubic Feet	31 CFM	2" I.D.	395 LBS.



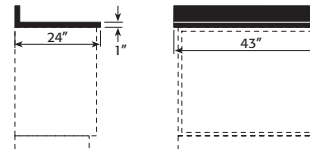
Base Cabinet

Product Number	Width	Depth	Height	Weight
148P732GY	42"	22"	35"	155 LBS.



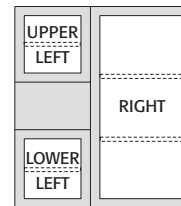
Counter Top - Black Chemsurf

Product Number	Width	Depth	Height	Weight
20L2443	43"	24"	1"	55 LBS.



Shelves

Product Number	For Cabinet Style	Compartment Location
950P202	Counter Top	Right
950P203	Floor Mounted	Upper Left
950P204	Floor Mounted	Lower Left
950P205	Floor Mounted	Right



Specifications

Unit shall consist of three separate fuming chambers of various sizes to allow separate fuming processes concurrently. Each chamber shall be dampered, lockable, and glazed. Chambers shall have v-strip sealed doors to minimize airflow during fuming process. Each compartment shall include a vapor-proof incandescent light and access to 110 volt AC receptacles.

Construction shall be 45 pound density particle board core with doweled joinery. Wilson Art Chemsurf® chemical resistant plastic laminate interior and high-pressure plastic laminate exterior. Color – D354 White (interior), 1500N Gray (exterior).

Each unit shall contain a test report verifying proper containment with the chamber closed. Test shall be based on ASHRAE 110-1995 methodology. Containment must be 4.0 AM 0.05 PPM or better.

Dimensions are nominal and illustrations and specifications are based on the latest product information available at the time of publication. The right is reserved to make changes at any time without notice.



Fisher Hamilton

Fisher Hamilton Inc.
1316 18th Street
Two Rivers, WI 54241
Tel: 920-793-1121

AL-1355-1 May98 USA

